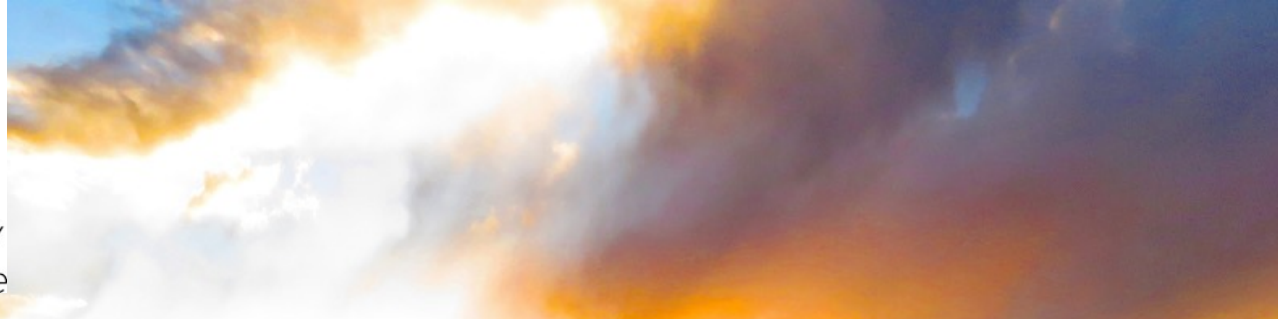




**FIRE  
ADAPTED  
BAILEY**

*Building Community  
& Wildfire Resilience*



# An Evacuation Workshop for Platte Canyon Senior Citizens





# Workshop Objectives

- Understanding our wildfire risks
- Understanding our unique evacuation challenges
- Everyone leaves with a personal evacuation plan





## Our Wildfire Risk A matter of WHEN not IF

- Policy – Over 100 years of active fire suppression
- Development – We subdivided our ranches and slowly developed into a metro Denver bedroom community
- Climate – a warmer dryer climate has created a longer fire season with more intense and destructive fires



*Glenisle, circa 1920*

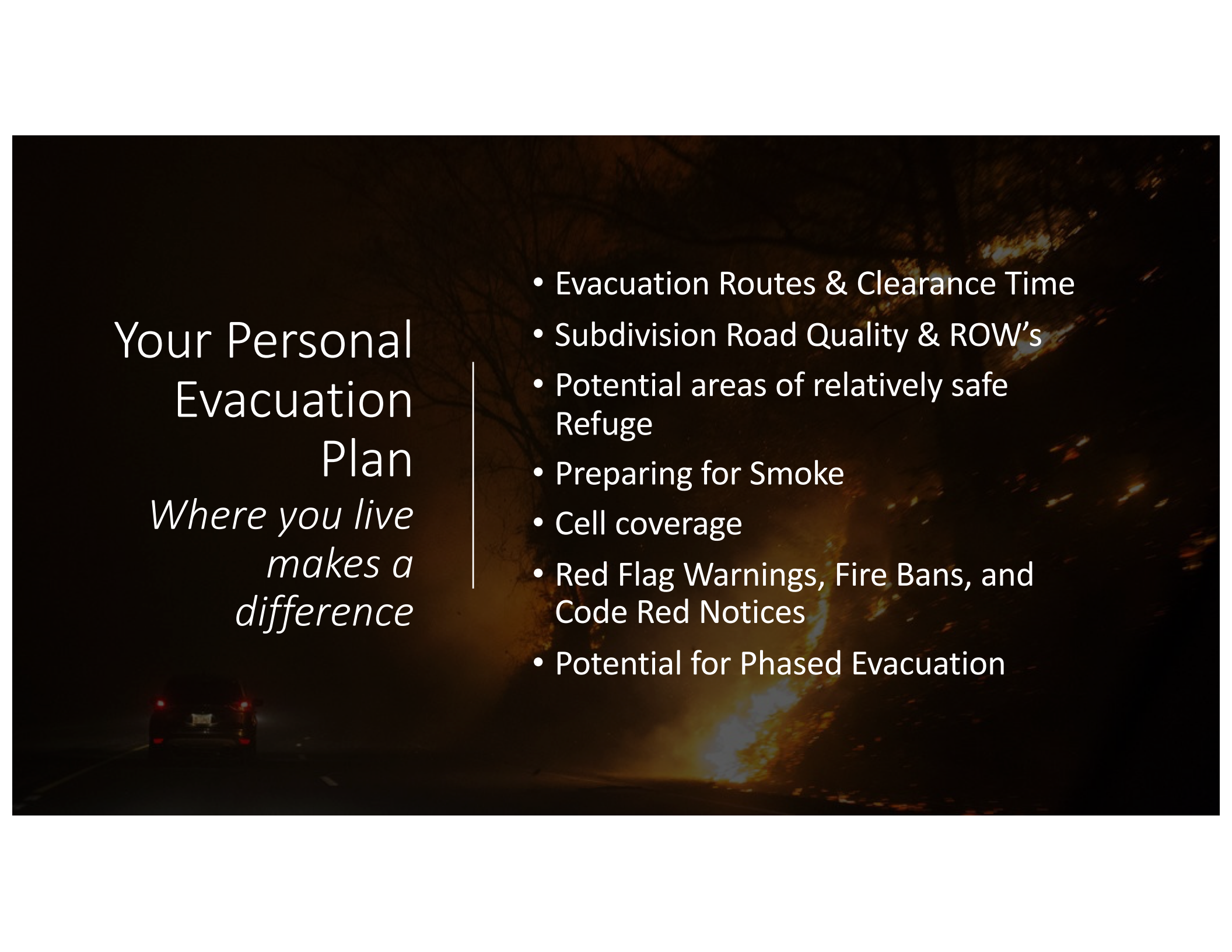




## Bailey Area Evacuation Issues

- Roadway Constraints
- Poor Communication Infrastructure
- A high % of “at risk” residents
  - Seniors & Disabled





# Your Personal Evacuation Plan

*Where you live  
makes a  
difference*

- Evacuation Routes & Clearance Time
- Subdivision Road Quality & ROW's
- Potential areas of relatively safe Refuge
- Preparing for Smoke
- Cell coverage
- Red Flag Warnings, Fire Bans, and Code Red Notices
- Potential for Phased Evacuation



# Burland/Roland Valley Area

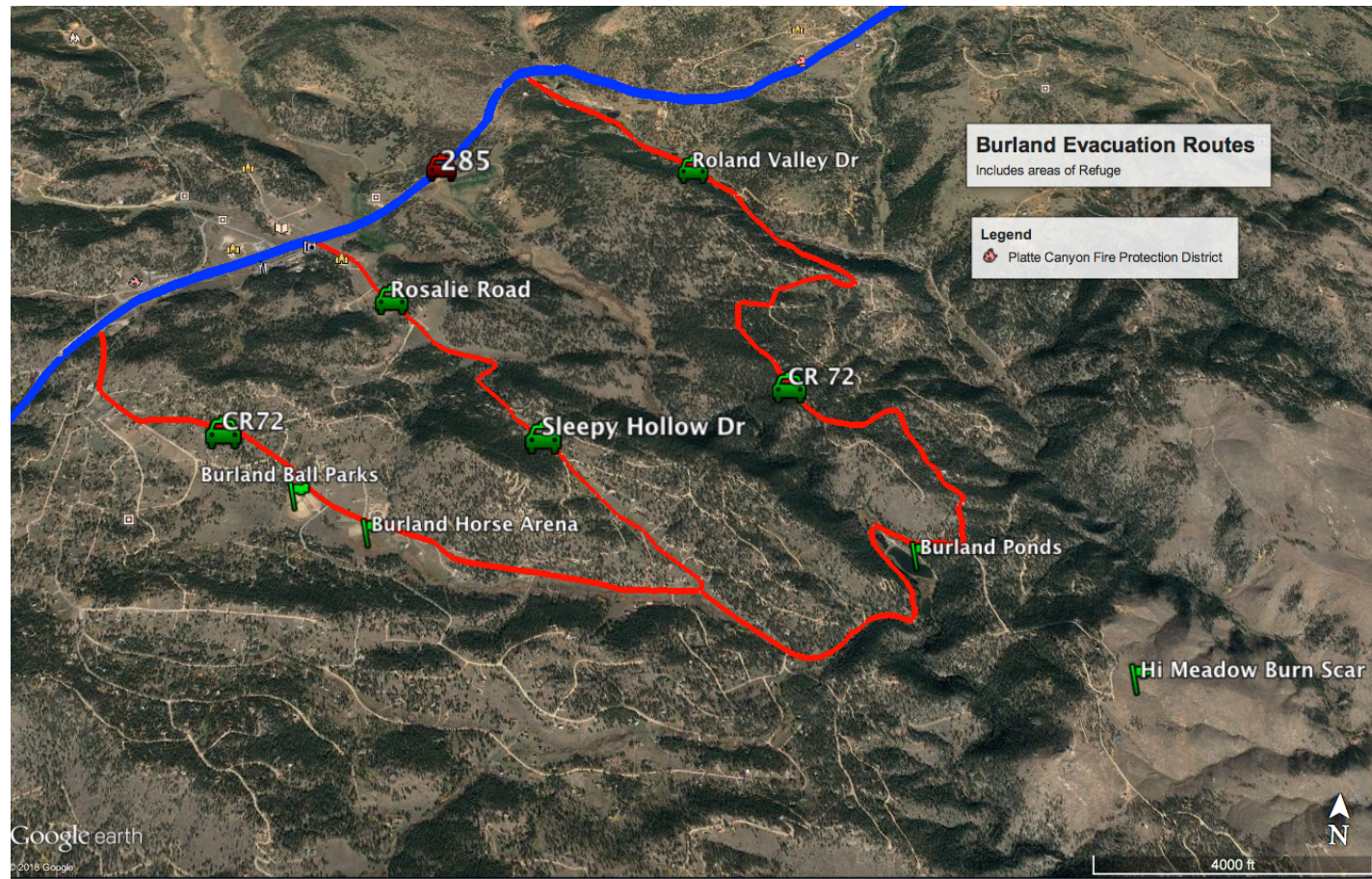
---

- ~1,500 Households
- Three Evacuation Routes
  - CR72
  - Roland Valley Drive
  - Rosalie Drive
- Best Cell Coverage
- Refuge Areas - Limited
- Estimated Evacuation Clearance Time < 3-Hours
- Water Sources for Suppression - Fair



# Burland/Roland Valley Areas of Refuge

- Ball Parks
- Horse Arena
- Burland Ponds
- Hi Meadow Burn Scar





# CR43 – Deer Creek Drainage

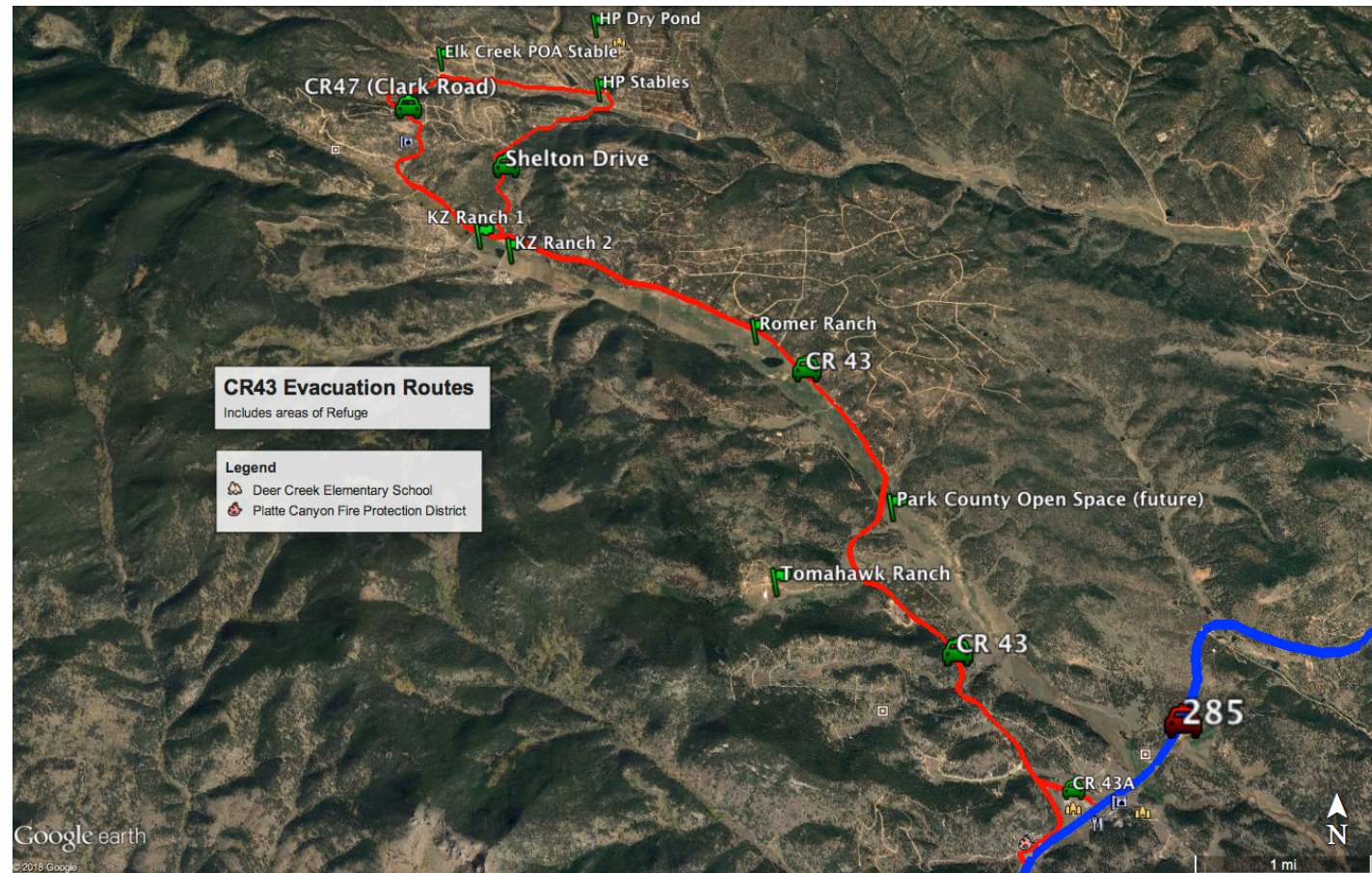
---

- ~2,500 Households
- One Evacuation Route
- Poor Cell Coverage
- Refuge areas - Multiple
- Estimated Evacuation Clearance Time  
> 5-Hours
- Water Sources for Suppression -  
Excellent



# CR43 Areas of Refuge

- HP Dry Pond
- HP Stables
- Elk Creek Stables & Pond
- KZ Ranch 1 & 2
- Romer Ranch at Hangman Pond
- Park County Open Space (future)
- Tomahawk Ranch





# Woodside Area

---

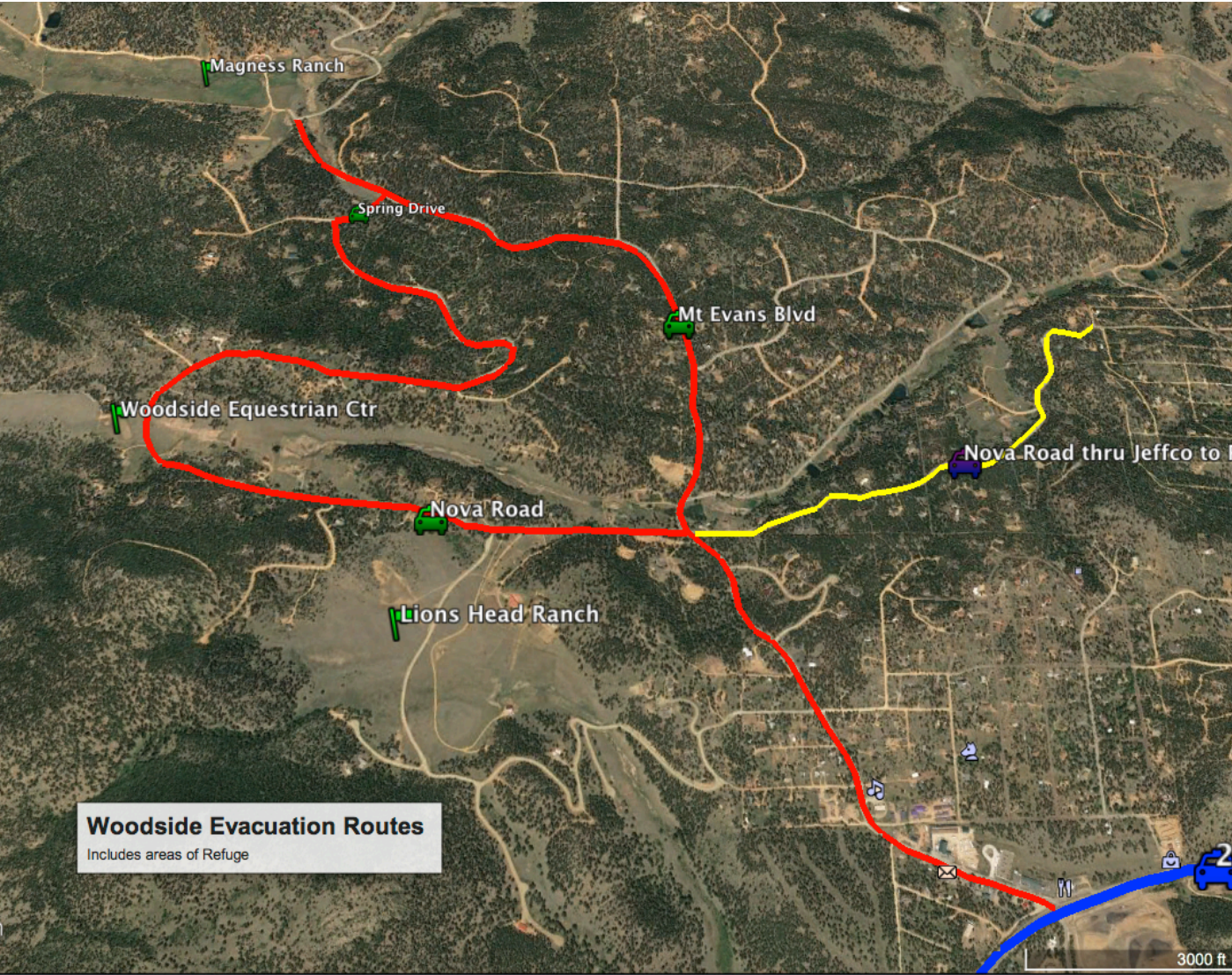
- ~500 Households
- Two Evacuation Routes
  - Factoring in Nova Rd to Parker Ave thru Jeffco
- Cell Coverage – Better
- Refuge Areas – some
- Estimated Evacuation Clearance Time - < 2-Hours
  - Complicated by overlapping jurisdictions
- Water Sources for Suppression - Good





# Woodside Refuge Areas

- Magness Ranch
- Woodside Equestrian Center
- Lions Head Ranch





# Building Your Personal Evacuation Plan

- Important Phone Numbers
- Evac Route & Refuge Areas
  - Sheltering in Place & Smoke
- Large Animals & Pets
- Where to Go
- Stuff to Take & Emergency Supply Kits
- Red Flag, Fire Ban Checklist
- Official Information Sources
- Home Prep Checklist



# Important Phone Numbers

---

- Your Personal “Got Five”
- Insurance Claims
- Roadside Assistance
- Park County Animal Control
- Jefferson County Fairgrounds
- Pet Friendly Hotel/Motel





# Evacuation Routes & Refuge Areas

---

- It depends on where you live -  
Check out the Maps in your Packet
- Sheltering in your Home
- Areas of Refuge
- What about Smoke?



# Large Animals & Pets

- Large Animals
  - Do I have time?
  - Is there heavy traffic
- Pets
  - Be Fire Ban ready







# Where to Go?

---

- Friends & Family
- Local Shelter
- Hotels/Motels
  - Red Cross Vouchers?
  - Pet Friendly
- What if 285 is blocked?

# Stuff to Take & Emergency Supply Kits





# Red Flag, Fire Ban Checklist

- Think of this as your first warning
- A time for heightened awareness and readiness





## Official Fire Information Sources

---

- Platte Canyon FPD Facebook Page
- Pike National Forest Fire Information
- National Incident Information



Only IF time allows  
Home Prep  
Checklist

