



PLATTE CANYON
FIRE PROTECTION DISTRICT

Community Wildfire Protection Plan

Forest Stewards



Guild

putting the forest first

What is a Community Wildfire Protection Plan?

Key Components of a CWPP in Colorado

Participants

- The CWPP process must include local government, the local fire authority, local CSFS representatives and representatives of relevant federal land management agencies, as well as other relevant non-governmental partners.
- Partners should assess community risks and values, identify protection priorities and establish fuels treatment projects.

Plan Components

- A description of the community's wildland-urban interface (WUI) problem areas, preferably with a map and narrative.
- Information on the community's preparedness to respond to a wildland fire.
- A community risk analysis that considers, at a minimum, fuel hazards, risk of wildfire occurrence and community values to be protected both in the immediate vicinity and the surrounding zone where potential fire spread poses a realistic threat.
- Identification of fuels treatment priorities on the ground and methods of treatment.
- Ways to reduce structural ignitability.
- An implementation plan.

Level of Specificity

- A CWPP can be developed for any level of "community," from a homeowners association or mountain town to a county or metropolitan city.
- Information contained in the plan should be at a level of specificity appropriate for the community.
- County level plans can be used as an umbrella for community plans but should not be considered a substitute. A county plan will not provide the detail needed for project-level planning.

What makes a good CWPP
great?



Community
Members and
Land Management
Partners are the
key component

Planning processes
that are inclusive and
build trust create
successful and lasting
outcomes



Scientifically
based
community
risk analysis



Clear prioritization of
implementable
projects



A Better CWPP



Revised CWPP to meet
state standards

- Community risk profiling
- Wildfire hazard analysis
- Recommendations



Mitigation plan and
mitigation maps

Linked to partner work plans



Community communication infrastructure



Post-fire Debris Modeling



Hybrid document

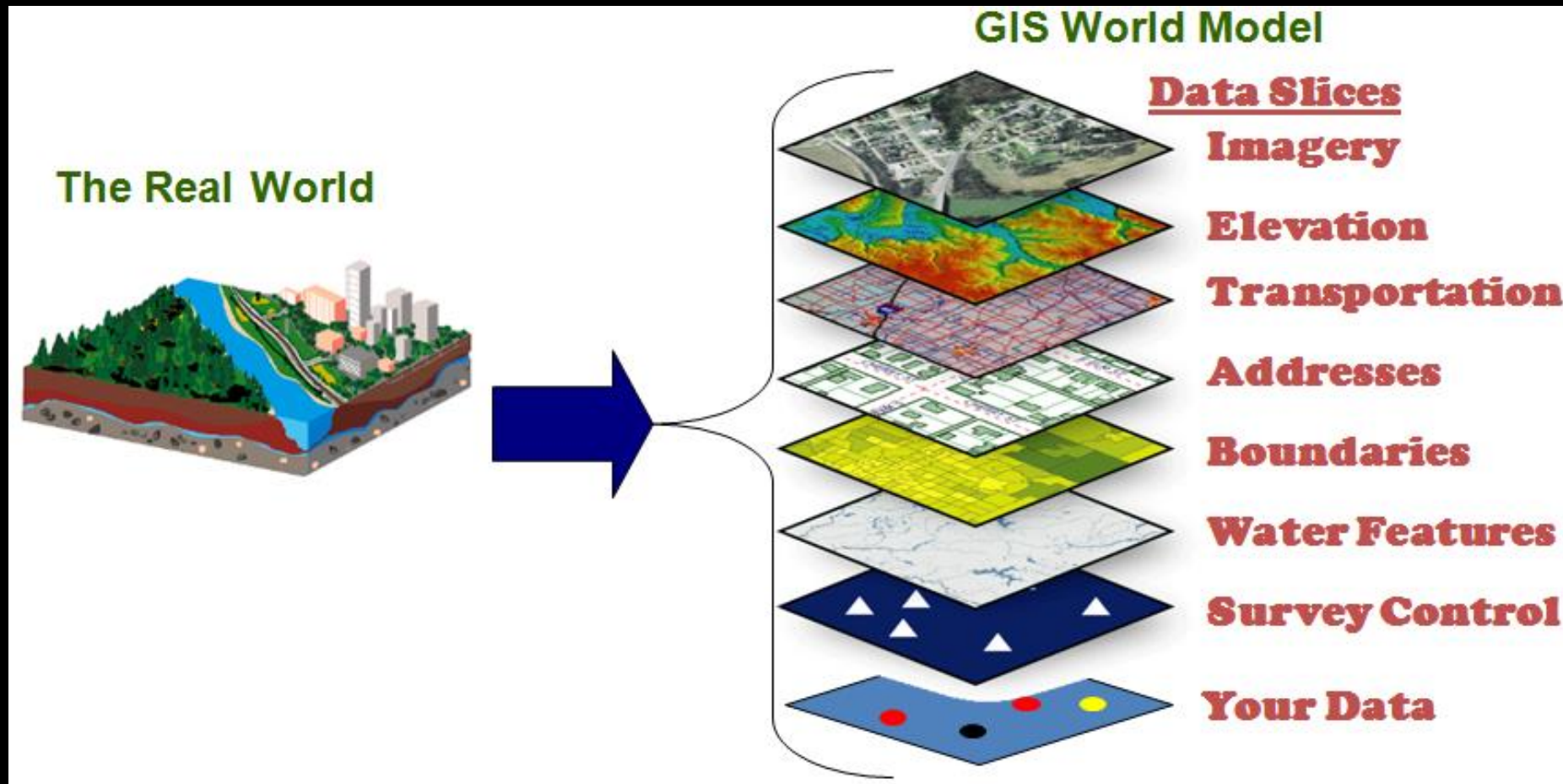
Focuses on managing risk
from a *landscape*, not
jurisdictional perspective

How are we doing this?

Working with YOU!



Digital mapping



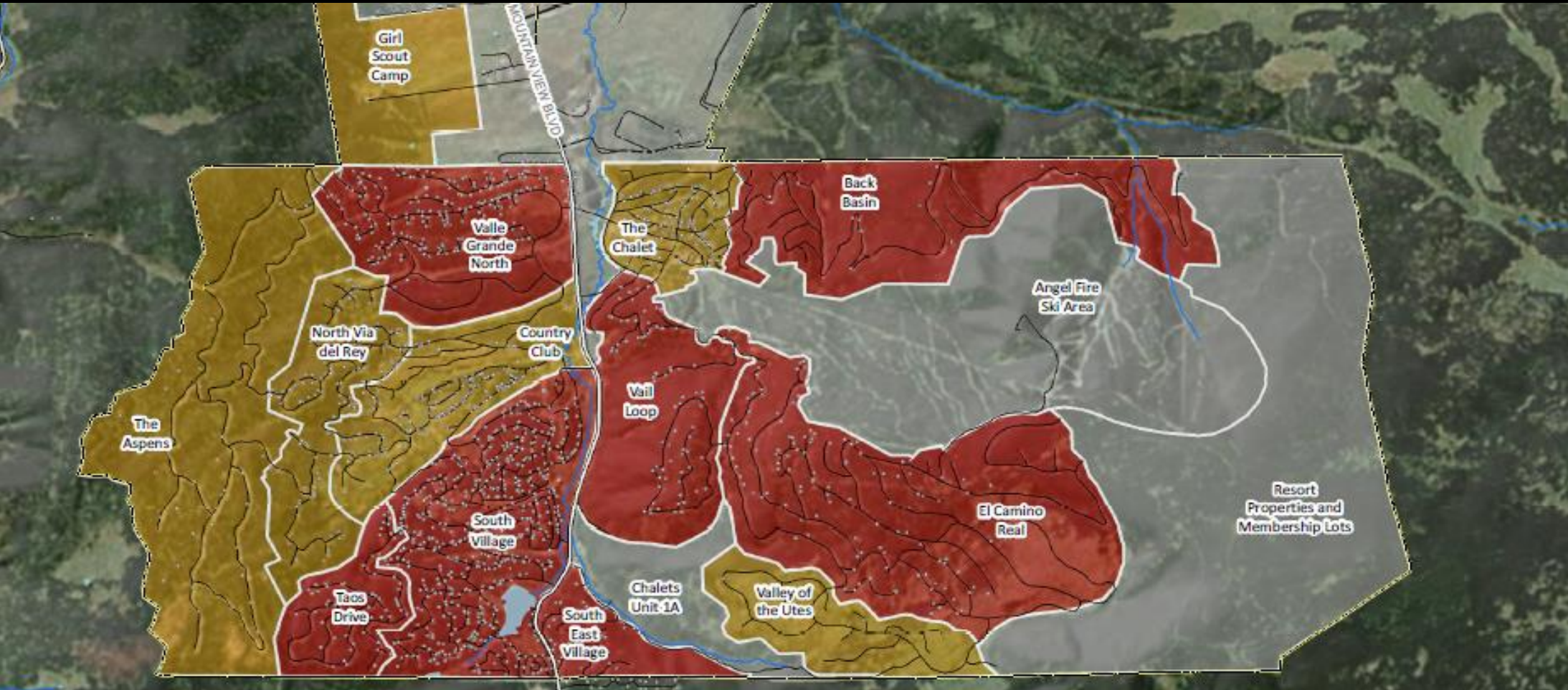
Critical facilities identified through community engagement



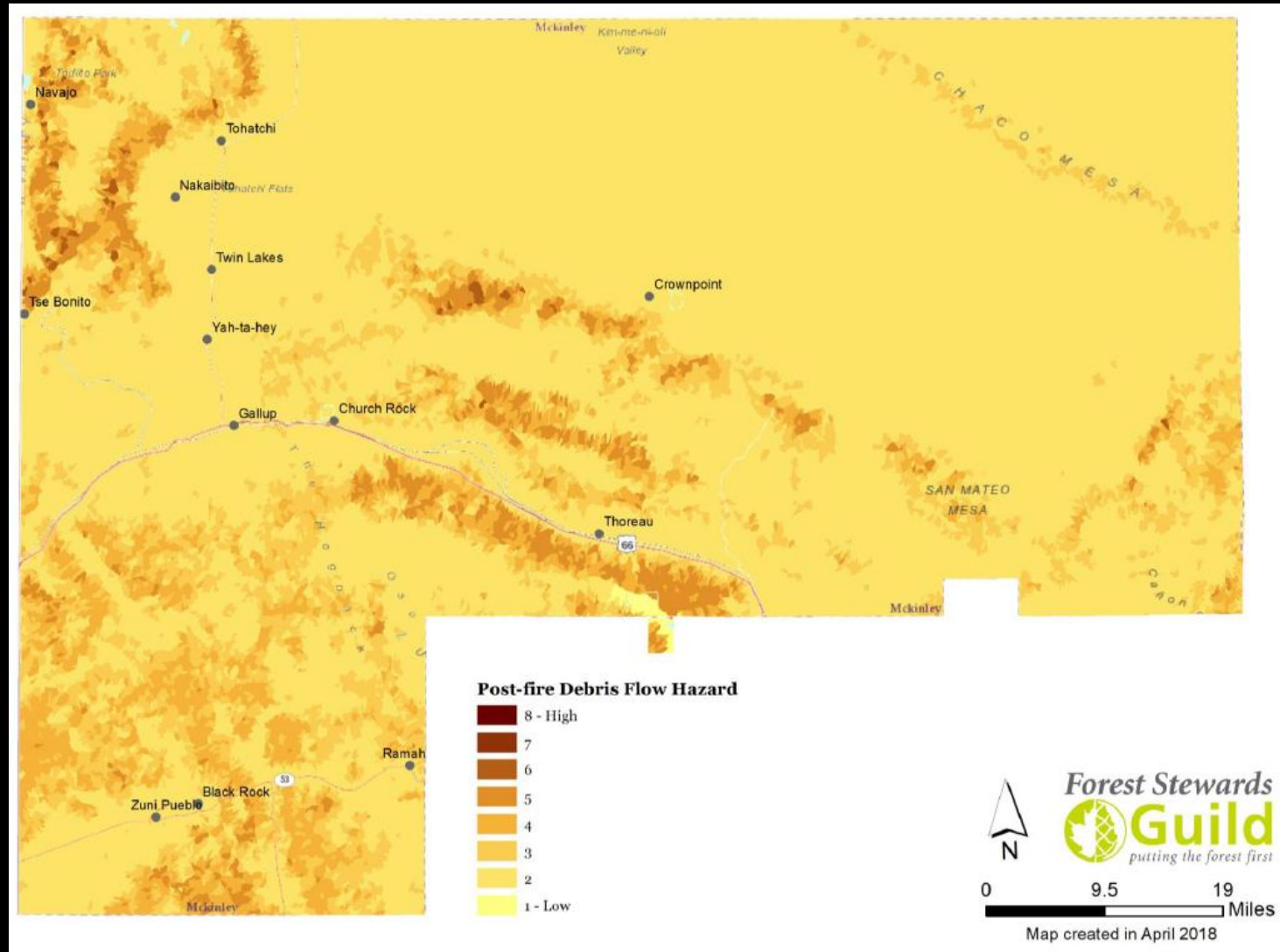
State of the art wildfire simulations



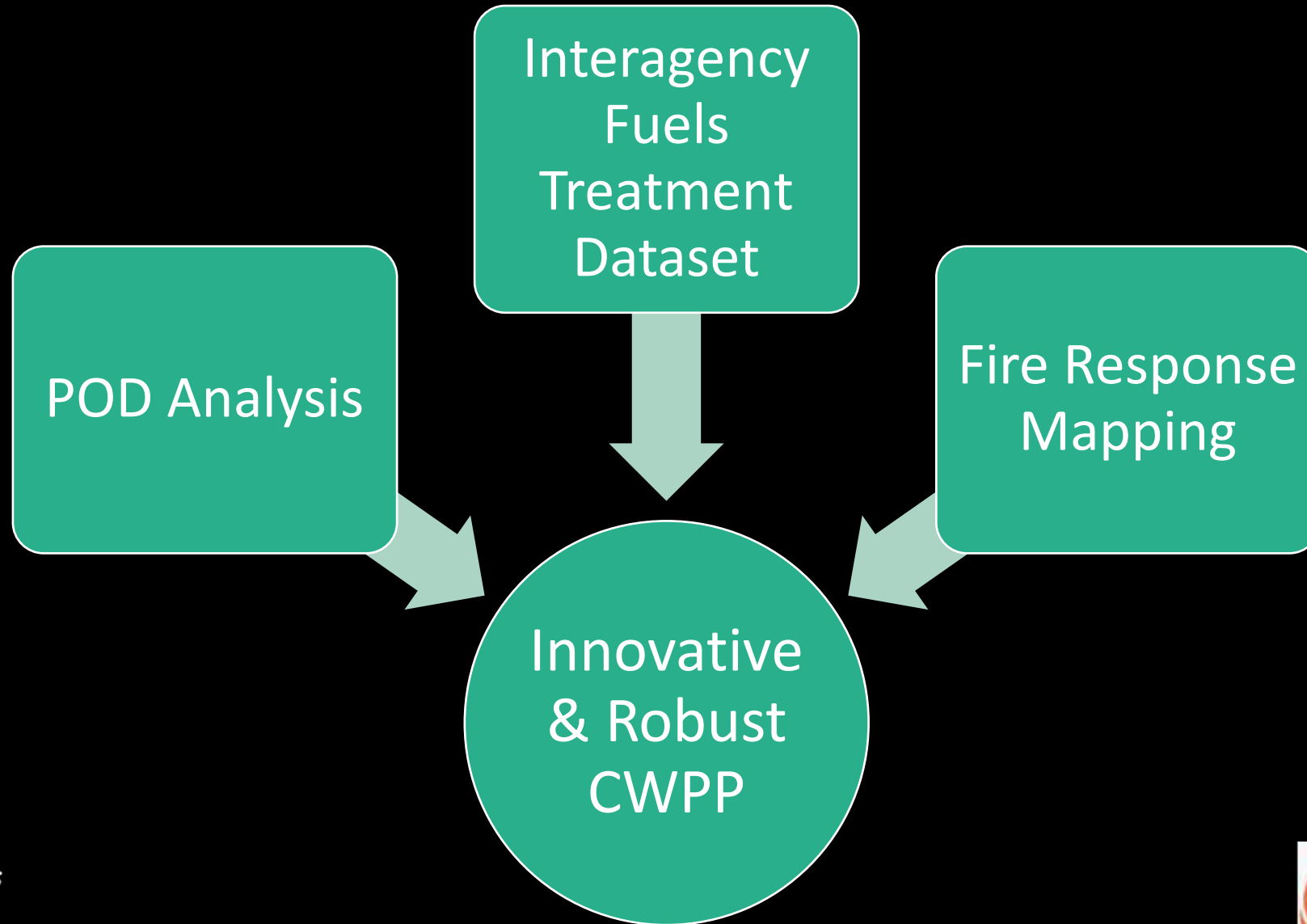
Community fire hazard - mapped



Post-fire Debris Flow Modeling

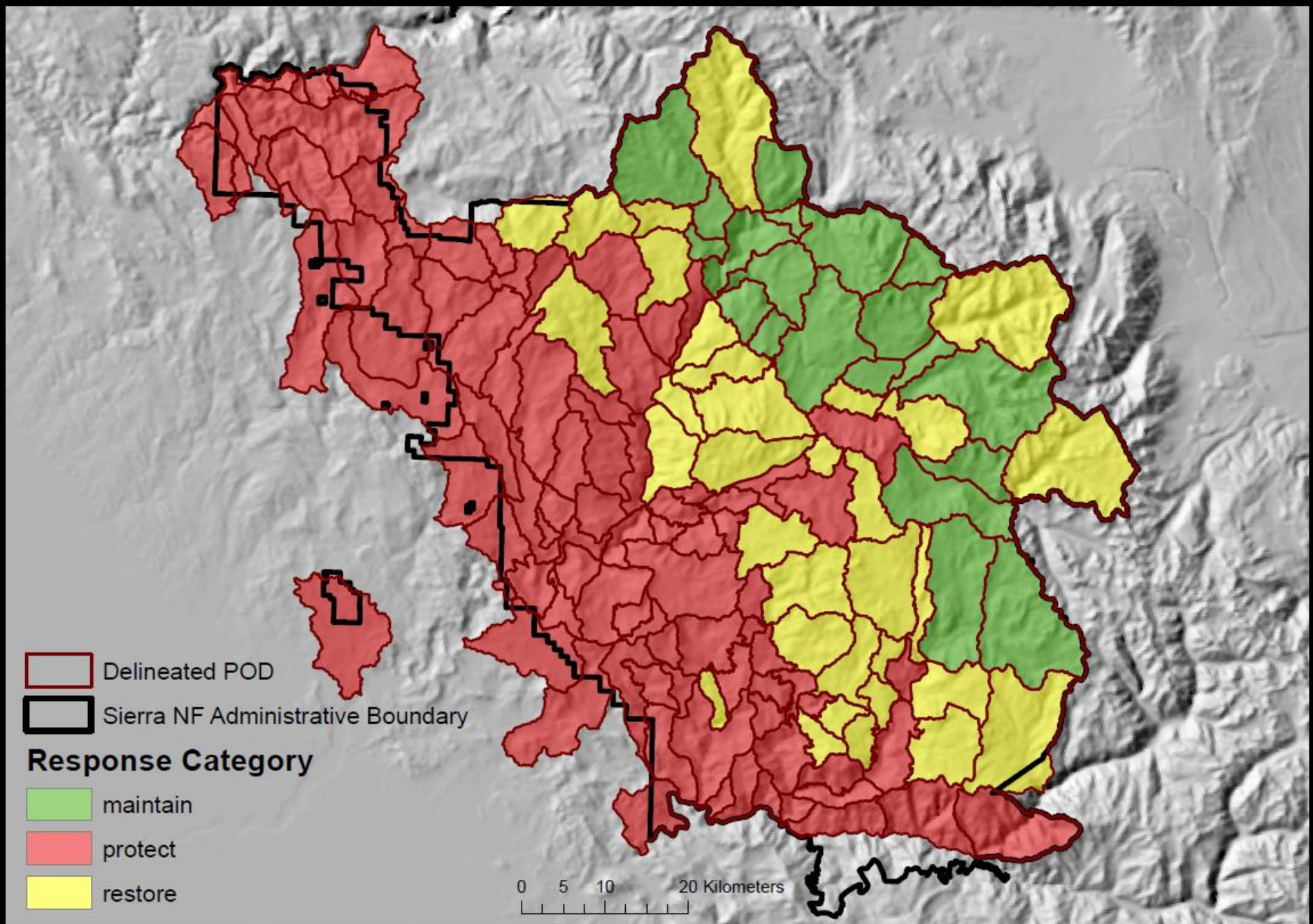


Partnering with Colorado Forest Restoration Institute



PODS: Potential Operational Delineations

- Pike National Forest working with USFS Rocky Mountain Research Station, Missoula Fire Lab and Colorado Forest Restoration Institute on spatial fire planning efforts.
- Planning will largely be on National Forest but will extend to adjacent lands including Platte Canyon FPD.
- Combines advanced spatial analysis with local expert knowledge of the landscape and fire behavior.
- Pre-identifies the control lines with the highest likelihood of success (irrespective of ownership/jurisdiction)



Interagency fuels treatment database

- CFRI created the Interagency Fuel Treatment GIS database in 2016 to track forest restoration and fuel treatment accomplishments on the Colorado Front range.
- Database is in process of being updated (expected completion December 2018).
- Provide great way of tracking accomplishments over 20+ years.
- Results can be used to compare with initial CWPP goals.

Upper South Platte Partnership Fire Response Maps

- USPP provided funding to generate fire response maps for three fire districts (Intercanyon, North Fork, and Platte Canyon).
- Strategic and tactical maps provide situational awareness to assist fire response and include features that firefighters will find useful (roads, addresses, mile markers, landownership, elevation contours, imagery).
- Maps are standardized for all three districts with wall to wall coverage over a common map grid.
- Easy to update, add data as needed.
- Provided in both hard copy and electronic as geo-enabled pdfs.

Where it all
comes together...

Use YOUR INPUT, PODs,
fuels maps, asset maps,
and fire behavior
simulations to identify
and plan priority
treatments to make
Platte Canyon Fire
Protection District more
resilient.



Review – What We're Delivering

- Revised CWPP to meet state standards
 - Community risk profiling
 - Wildfire hazard analysis
 - Recommendations
- Mitigation plan and mitigation maps
 - Linked to partner work plans
- Community communication structure – useful for continued engagement
- Post-fire Debris Modeling
- Hybrid document
 - focuses on managing risk from a *landscape*, not jurisdictional perspective



Thank you

Dave Lasky

dave@forestguild.org

303.588.3440